

ATTENUATORS SMA

**UP TO 4 GHz
300 WATTS**

api 
technologies corp.
> INMET

MODELS: XB300W-XX, XB300W-XXF, XB300W-XXM

SPECIFICATIONS:

Electrical:

Frequency Range _____ DC - 4 GHz
Standard Freq. Values _____ 2.5 & 4 GHz
Standard dB Values _____ 3, 6, 10, 20, 30 & 40 dB
Attenuation Accuracy _____ DC-1.5 GHz 1.5-2.5GHz 2.5-4GHz
3 & 6 dB _____ ± 0.50 dB _____ ± 0.50 dB _____ ± 0.75 dB
10, 20, 30 & 40 dB _____ ± 0.75 dB _____ ± 1.0 dB _____ ± 1.5 dB
Input VSWR (Max.)
3, 6, 10 & 20 dB _____ 1.15:1 _____ 1.25:1 _____ 1.35:1
30 & 40 dB _____ 1.15:1 _____ 1.25:1 _____ 1.50:1
Input Power _____ 300 Watts Avg. @ +25°C
Derated Linearly to 60 Watts @ +125°C
Peak Power _____ 2 kW Max.
(5 μ Sec Pulse, .05% Duty Cycle)
Impedance _____ 50 Ohms
Operating Temp Range _____ -54°C to +125°C

Mechanical:

SMA Connectors _____ Passivated Stainless Steel
Mates with MIL-STD-348
Conductors _____ Gold Plated Beryllium Copper
Housing _____ Anodized Aluminum

Note: Units are unidirectional. Units must be positioned in such a way as to allow free air flow around fins to assure performance. Connectors cannot be used to support the units weight.

Model Number: **XB300W-XX**

Male/Female Connectors
Length: 7.65 \pm .10 [194.31 \pm 2.54]
Pictured

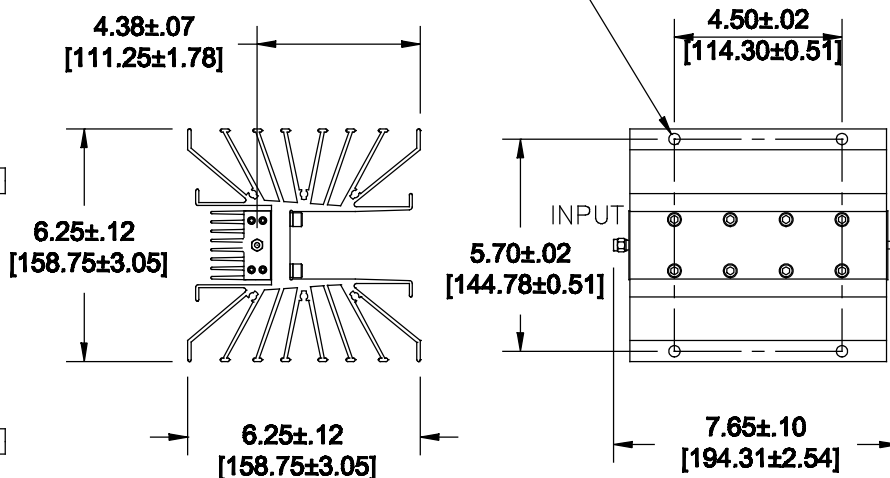
Model Number: **XB300W-XXF**

Female/Female Connectors
Length: 7.52 \pm .10 [191.01 \pm 2.54]

Model Number: **XB300W-XXM**

Male/Male Connectors
Length: 7.78 \pm .10 [197.61 \pm 2.54]

**8X .302 [Ø7.67] THRU ONE FIN
THIS SIDE AND OPPOSITE SIDE**



HOW TO ORDER:

Model Number: **XB300W-XXY**

Freq. Range
2 = DC - 2.5 GHz
4 = DC - 4 GHz

dB Value

Connector Config.
= Male/Female
F = Fem/Fem
M = Male/Male

Ordering Examples:

Model Number: **2B300W-6**
DC - 2.5 GHz, 6 dB; SMA - Male/Fem

Model Number: **4B300W-40F**
DC - 4 GHz, 40 dB; SMA - Fem/Fem

Note: Dimensions in Brackets are Expressed in Millimeters and are for Reference Only.

Design specifications are subject to change without notice.
Contact factory for technical specifications before purchasing or use.

XB300W-ATT; REV D

300 Dino Drive • Ann Arbor, MI 48103-9457 U.S.A. • 888-244-6638 or 734-426-5553 • FAX 734-426-5557 • inmet.apitech.com