

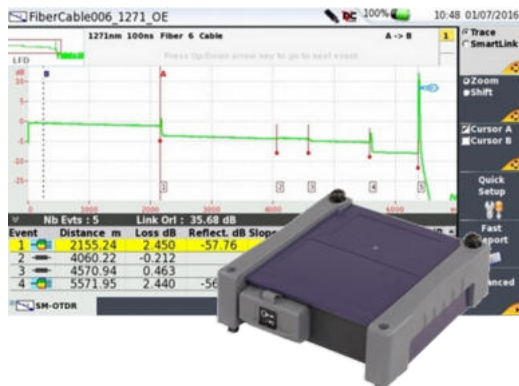
VIAVI T-BERD/MTS 4100-Series CWDM OTDR Modules

For T-BERD/MTS-2000, -4000 V2, -5800 Platforms

Connect the VIAVI 4100-Series CWDM OTDR family to successfully deploy and maintain C-RAN, DAS, CWDM, and fronthaul networks. CWDM OTDR-family optical performance, combined with the T-BERD®/MTS platform's suite of testing features, ensures that testing jobs are performed right—the first time.

Testing features include:

- Automatic multitest configurations
- Easy-to-read summary results table with pass/fail analysis
- Quick trace interpretation with SLM (optional)
- FastReport™ onboard report generation



Benefits

- Characterize fiber links with exact CWDM wavelengths
- Qualify C-RAN, DAS, and any mobile fronthaul network
- Troubleshoot live networks with in-service testing capability
- Verify end-to-end continuity using the continuous wave source function
- Eliminate OTDR interpretation errors with Smart Link Mapper (SLM) without comprising test times

Features

- 8 or 10 CWDM wavelengths in 1 module and 18 wavelengths in 2 modules
- Optimized performance for access and metro applications
- Integrated CW light source with modulation capability
- Instantaneous traffic detection

Applications

- Qualification of fronthaul access networks
- Testing new CWDM wavelength routes without disrupting traffic on active channels
- Pinpointing faults and their exact locations while in service

Specifications (typical at 25°C)

| | |
|-------------------------------------|--|
| Laser safety | Class 1 (IEC), Class 1 (21CFR) |
| Weight | 430g (0.95 lb) |
| Dimensions (w x h x d) | 128 x 134 x 40 mm (5 x 5.28 x 1.58 in) |
| Distance Units | Km/m/mile/ft |
| Group index range | 1.30000 to 1.70000 in 0.00001 steps |
| Number of data points | Up to 256,000 data points |
| Distance Measurements | |
| Mode | Automatic or dual cursor |
| Display range | From 0.5 up to 260 km |
| Display resolution | 1 cm |
| Cursor resolution | From 1 cm |
| Sampling resolution | From 4 cm |
| Accuracy | ±1 m ±sampling resolution ±1.10-5 x distance (excluding group index uncertainties) |
| Attenuation Measurements | |
| Mode | Automatic, manual, 2-point, 5-point and LSA |
| Display range | From 1.25 dB to 55 dB |
| Display resolution | 0.001 dB |
| Cursor resolution | From 0.001 dB |
| Attenuation linearity | ±0.03 dB/dB |
| Threshold | 0.01 to 1.99 dB in 0.01 dB step |
| Reflectance/ORL Measurements | |
| Mode | Automatic or manual |
| Reflectance accuracy | ±2 dB |
| Display resolution | 0.01 dB |
| Threshold | -11 to -98 dB in 1 dB steps |
| Storage | Bellcore/Telcordia compatible Version 1.1 and Version 2.0 |

| OTDR | |
|------------------------------------|--|
| CWDM Wavelengths ¹ | 1271/1291/1311/1331/1351/1371/1391/ 1411/1431/1451/1471/1491/1511/1531/ 1551/1571/1591/1611nm +/-3nm |
| Pulsewidth | 10 ns to 20 µs |
| Dynamic range ² | 35dB |
| Event dead zone ³ | 1.5 m |
| Attenuation dead zone ⁴ | 5 m |
| Continuous Wave Light Source | Wavelengths: same as OTDR Output power -3.5 dBm Operating modes ⁵ : CW, 270 Hz, 330 Hz, 1 kHz, 2 kHz |
| Automatic traffic detection | Yes |
| In-service testing | Yes |

1. Laser at 25°C and measured at 10 µs.
2. The one-way difference between the extrapolated backscattering level at the start of the fiber and the RMS noise level, after 3 minutes averaging and using the largest pulsewidth.
3. Measured at ±1.5 dB down from the peak of an unsaturated reflective event using the shortest pulsewidth.
4. Measured at ±0.5 dB from the linear regression using a FC/PC reflectance and using the shortest pulsewidth.
5. Subtract 3 dB when used in modulation mode (270/330/1/2 kHz).

Ordering Information

| Description | Part Number |
|--|-----------------------------------|
| 4100 CWDM OTDR Modules | |
| 1271 to 1451 nm | E41CWDM10L |
| 1471 to 1611 nm | E41CWDM8U |
| 1431 to 1611 nm | E41CWDM10U |
| Optical Connectors | |
| Screw type adapter for PC connectors | EUSCADS, EUFCADS, EULCADS |
| Screw type adapter for APC (8°) connectors | EUSCADS-APC, EUFCADS, EULCADS-APC |

For more information on T-BERD/MTS-2000/-4000 V2/-5800 test platforms, refer to their respective datasheets.

VIAMI Care Support Plans

Increase your productivity for up to 5 years with optional VIAMI Care Support Plans:

- Maximize your time with on-demand training, priority technical application support and rapid service.
- Maintain your equipment for peak performance at a low, predictable cost.

Contact your local representative for more information on VIAMI Care Support Plan options or visit:

viavisolutions.com/viavicareplan

Features

*5-year plans only

| Plan | Objective | Technical Assistance | Factory Repair | Priority Service | Self-paced Training | 5 Year Battery and Bag Coverage | Factory Calibration | Accessory Coverage | Express Loaner |
|---|------------------------------------|----------------------|----------------|------------------|---------------------|---------------------------------|---------------------|--------------------|----------------|
|  BronzeCare | Technician Efficiency | Premium | ✓ | ✓ | ✓ | | | | |
|  SilverCare | Maintenance & Measurement Accuracy | Premium | ✓ | ✓ | ✓ | ✓* | ✓ | | |
|  MaxCare | High Availability | Premium | ✓ | ✓ | ✓ | ✓* | ✓ | ✓ | ✓ |



Contact Us **+1 844 GO VIAMI**
(+1 844 468 4284)

To reach the VIAMI office nearest you,
visit viavisolutions.com/contact.

© 2020 VIAMI Solutions Inc.
Product specifications and descriptions in this document are subject to change without notice.
4100cwdmotdr-ds-fop-nse-ae
30176250 908 0820